





Kalyani Nagar

Westin  
Hotel

Koregaon Park

Marriott  
Suites

ASI  
Campus

ASEEM

Passport  
Office







# ASEEM

OFFICES | SHOPS | CUSTOMIZED SPACES

Ghorpadi - Mundhwa Road, Near Passport Office

ASEEM

PROJECT BY  
PANADE  
REALTORS

Actual Photo

500

Meters from Koregaon Park

60

Feet Wide Ghorpadi-Mundhwa road

6

Storey commercial complex

NUMEROUS POSSIBILITIES



ASEEM

OFFICES | SHOPS | CUSTOMIZED





ASEEM

OFFICES | SHOPS | CUSTOMIZED

Corporate Offices





ASEEM

OFFICES | SHOPS | CUSTOMIZED

Fine Dining Restaurant





ASEEM

OFFICES | SHOPS | CUSTOMIZED

Terrace Bistro





**ASEEM**

OFFICES | SHOPS | CUSTOMIZED

**Serviced Dormitory**





ASEEM

OFFICES | SHOPS | CUSTOMIZED

Co working Space



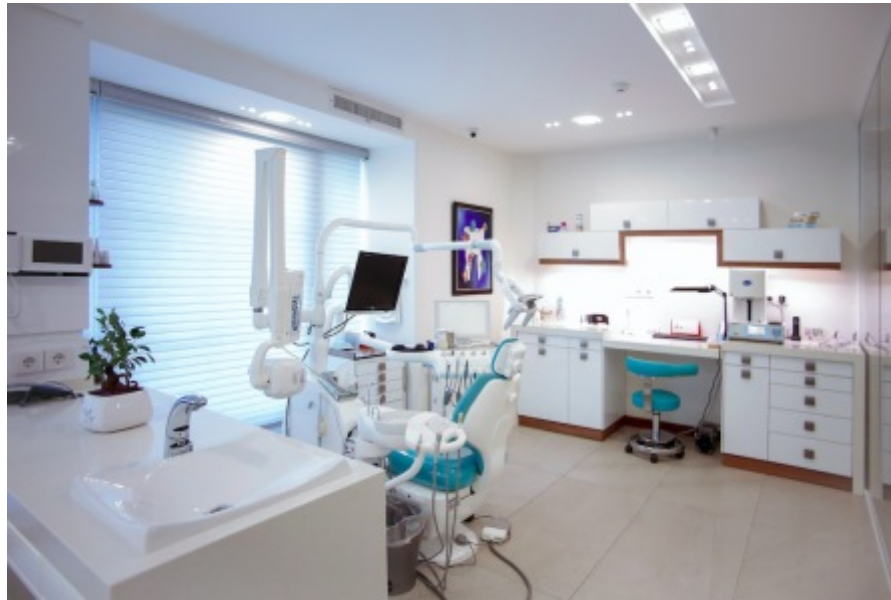


ASEEM

OFFICES | SHOPS | CUSTOMIZED

Banquet Hall





ASEEM

OFFICES | SHOPS | CUSTOMIZED

Consulting | Clinic | Pharmacy | Retail



Shop/Showroom  
**551 - 1253 sft.**

---

A-Grade Offices  
**427 - 1019 sft.**



# ASEEM

OFFICES | SHOPS | CUSTOMIZED

Actual Photo





**All Shops With Main Road Frontage**

**Washroom For Each Shop**

**Pantry + Washroom For Each Office Unit**

**Ample Parking Space**



**ASEEM**

OFFICES | SHOPS | CUSTOMIZED

Actual Photos





**ASEEM**

OFFICES | SHOPS | CUSTOMIZED

Beautiful Green Views Around!

Actual Photo



# GROUND FLOOR PLAN



# ASEEM

OFFICES | SHOPS | CUSTOMIZED

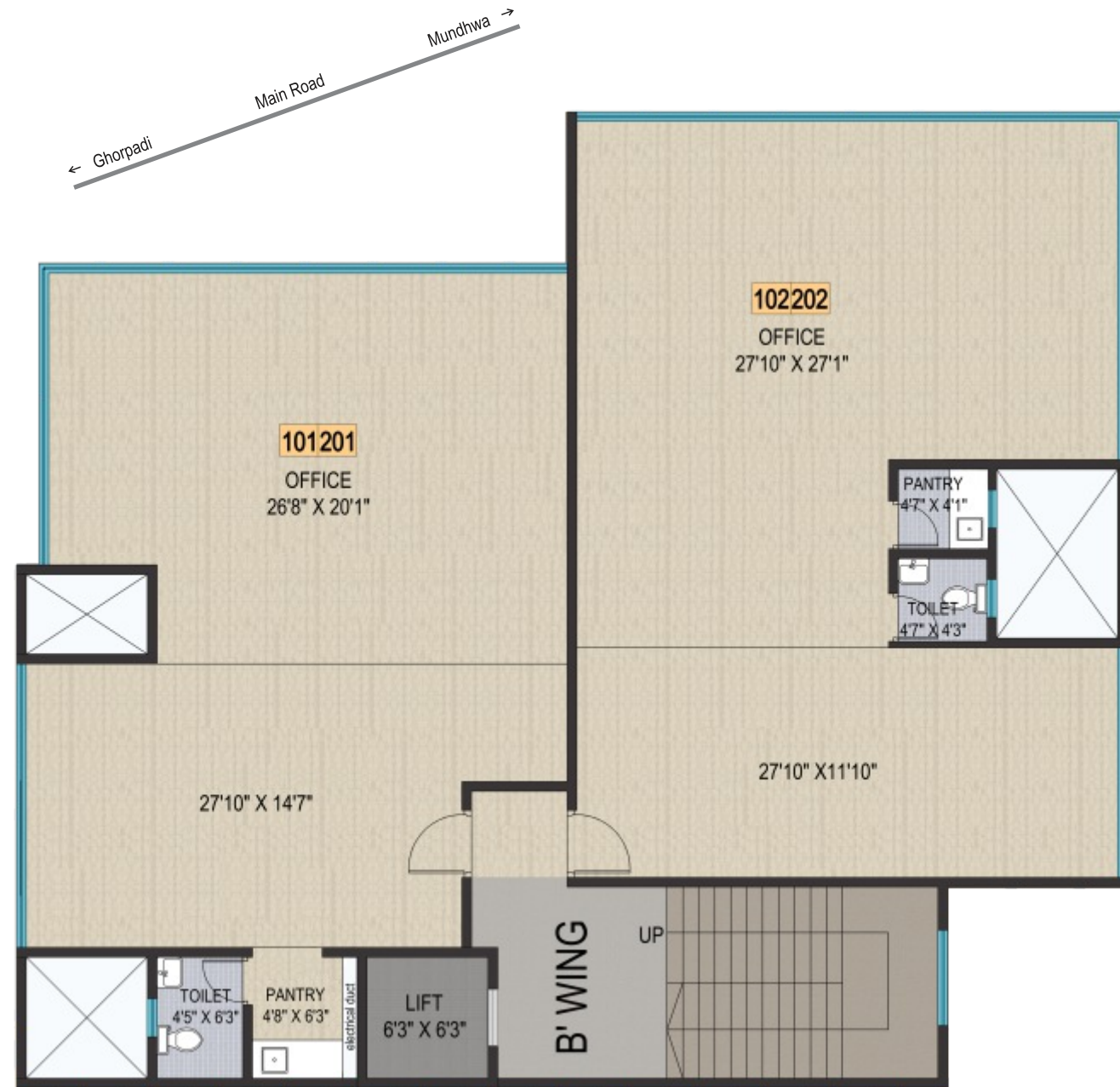
All Areas In Sq. Mtr.

SHOP NO.	GROUND	UPPER GROUND	Encl. BALCONY
01	23.77	48.4	7.66
02	16.55	18.75	0
03	20.32	26.23	0
04	23.51	31.26	5.83
05	30.49	35.94	3.96





# TYPICAL 1ST, 2ND FLOOR PLAN



# ASEEM

OFFICES | SHOPS | CUSTOMIZED

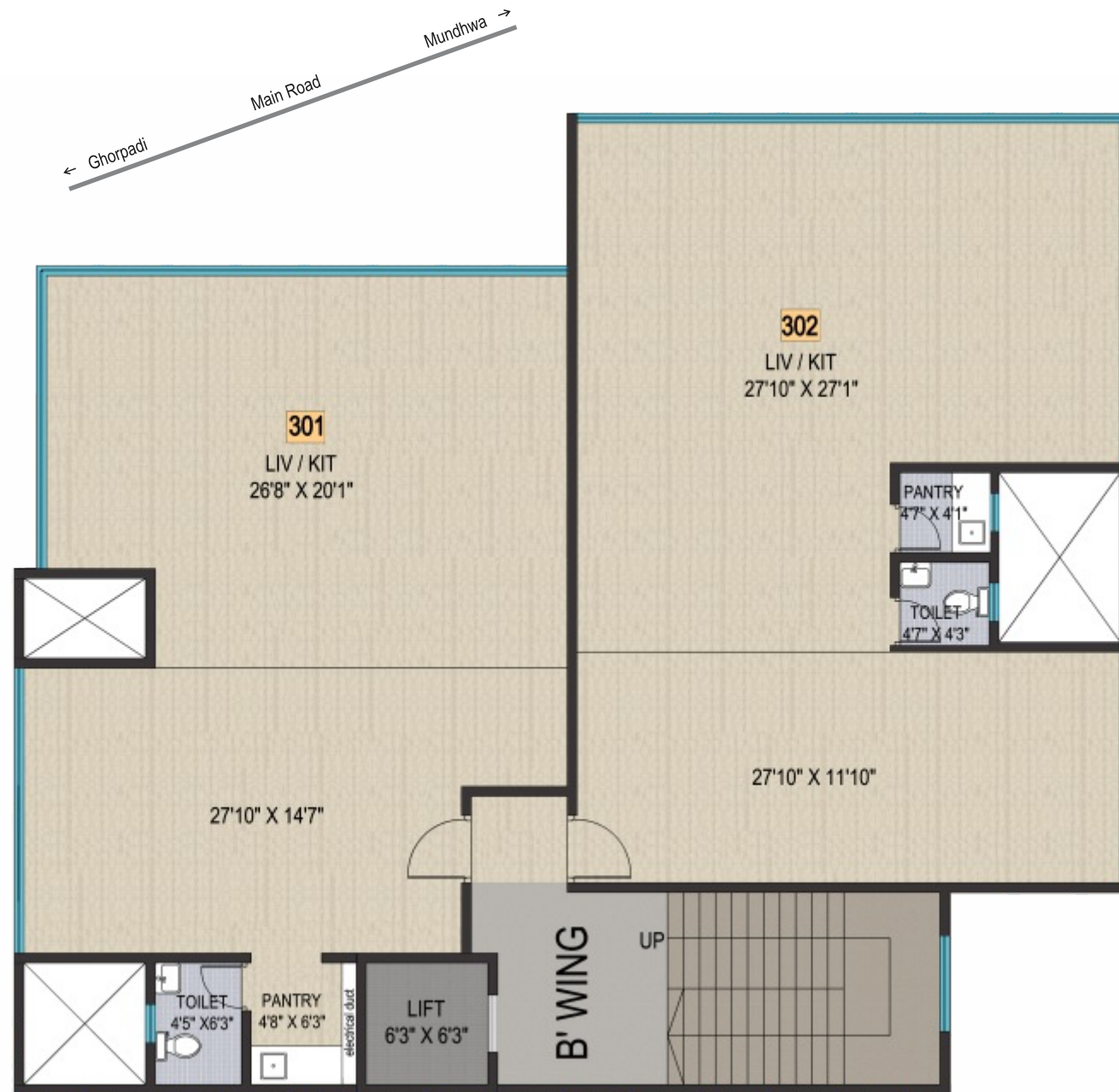


All Areas In Sq. Mtr.

OFFICE NO.	CARPET	Encl. BALCONY	TERRACE
101, 201	79.06	7.66	0
102, 202	84.83	9.79	0



# TYPICAL 3RD FLOOR PLAN



# ASEEM

OFFICES | SHOPS | CUSTOMIZED

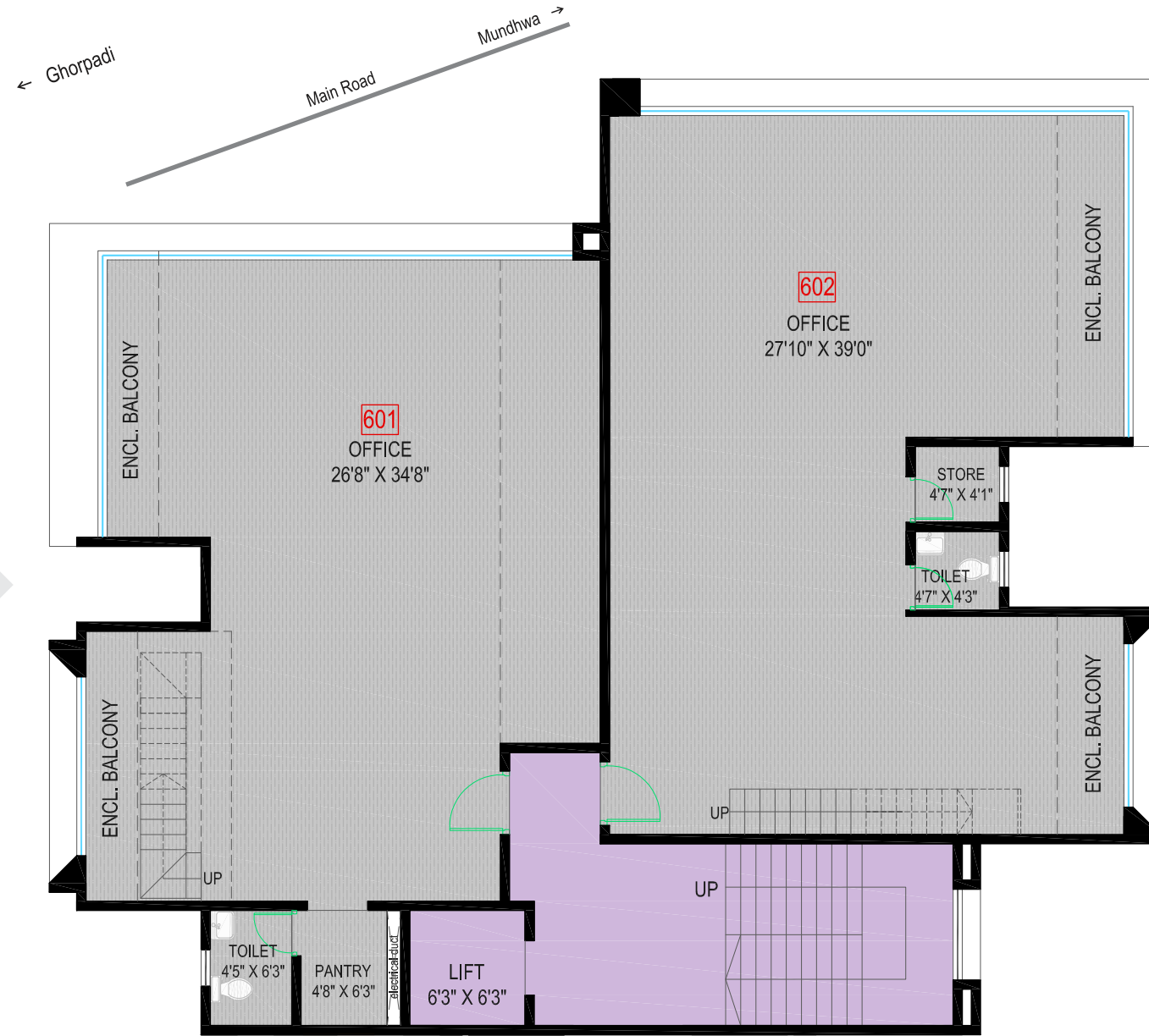
All Areas In Sq. Mtr.

OFFICE NO.	CARPET	Encl. BALCONY	TERRACE
301	79.05	7.66	0
302	84.83	9.79	0





# TYPICAL 6TH FLOOR PLAN



All Areas In Sq. Ft.

OFFICE NO.	CARPET	Encl. BALCONY	TOP TERRACE
601	849	83	901
602	913	105	969

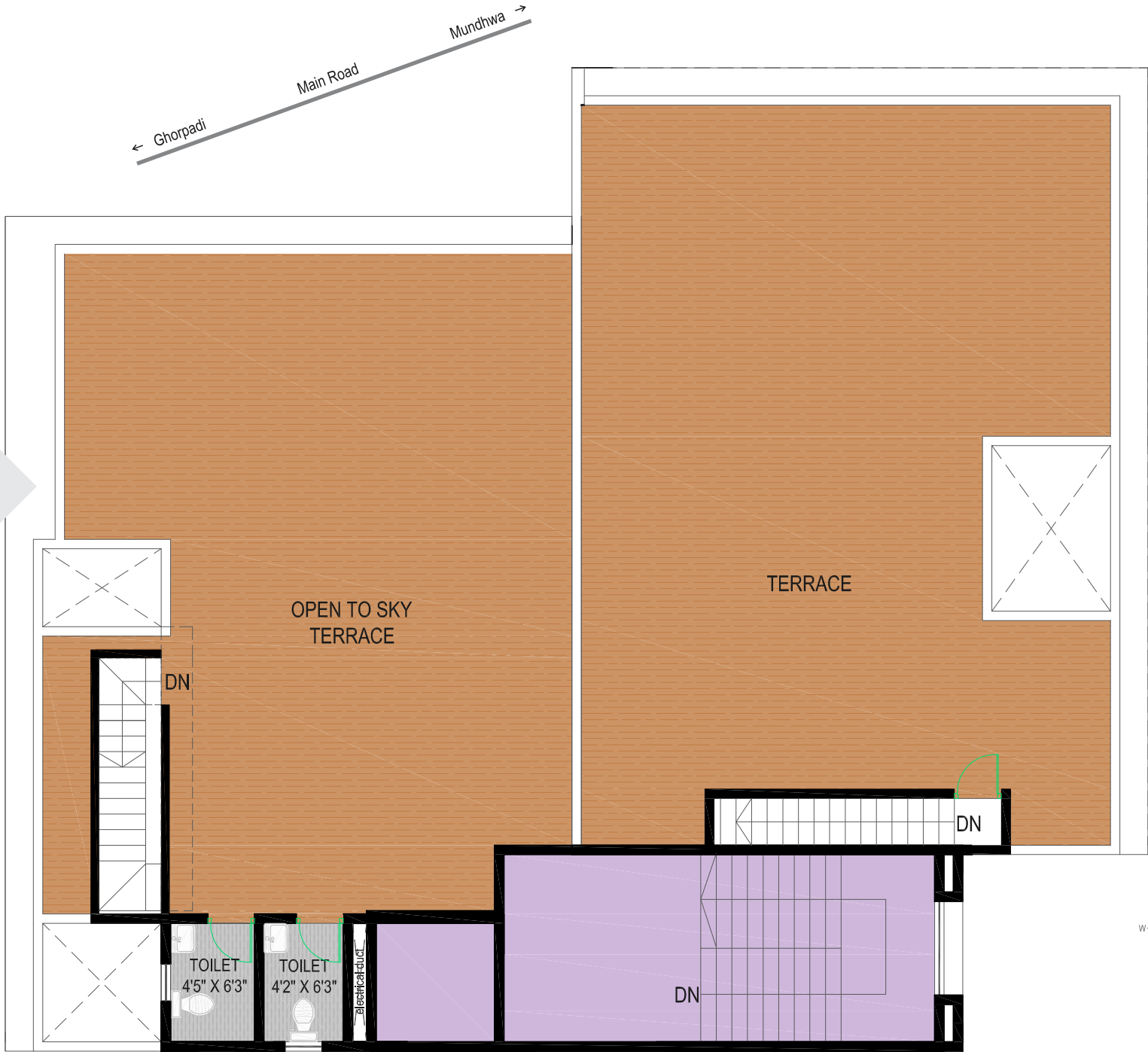


# ASEEM

OFFICES | SHOPS | CUSTOMIZED



# TERRACE FLOOR PLAN



# ASEEM

OFFICES | SHOPS | CUSTOMIZED

# GROUND FLOOR PLAN



# ASEEM

OFFICES | SHOPS | CUSTOMIZED





**Call: 9623430000, 9623426589**

**SITE ADDRESS: CTS No. 312, Near Passport Office,  
Koregaon Park Annexe, Ghorpadi, Pune 411001**

**[www.ranaderealtors.com](http://www.ranaderealtors.com)**



**Maha RERA no. P52100023060**

**[www.maharera.mahaonline.gov.in](http://www.maharera.mahaonline.gov.in)**

